



Brintons

the **self-expression** project

#TheBrintonsSEP

Group 4, Ant Farm



The Self-Expression Project

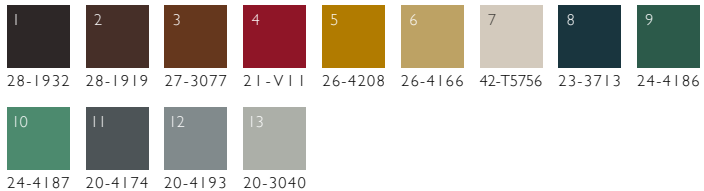
Group 4, Ant Farm

Carpets for ants: In group four, three designers observe and respond to an ant farm. Following the project's overall theme, the ant farm illustrates how landscapes are altered over time. Spatial tension, destruction, movement, and adaptation inspired designers to create unique axminster patterns.



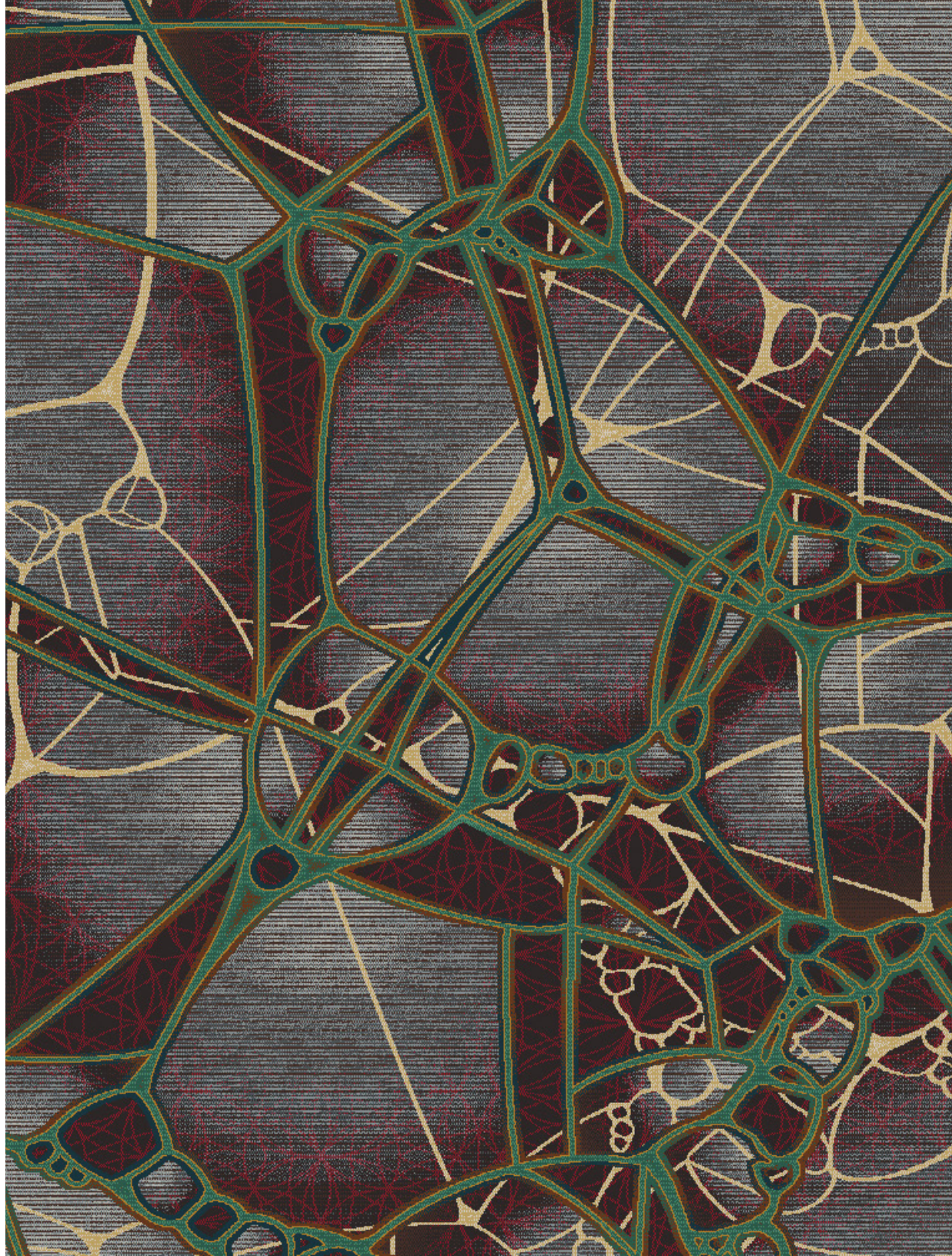
Terrien Hale, Senior Designer, Brintons Americas:

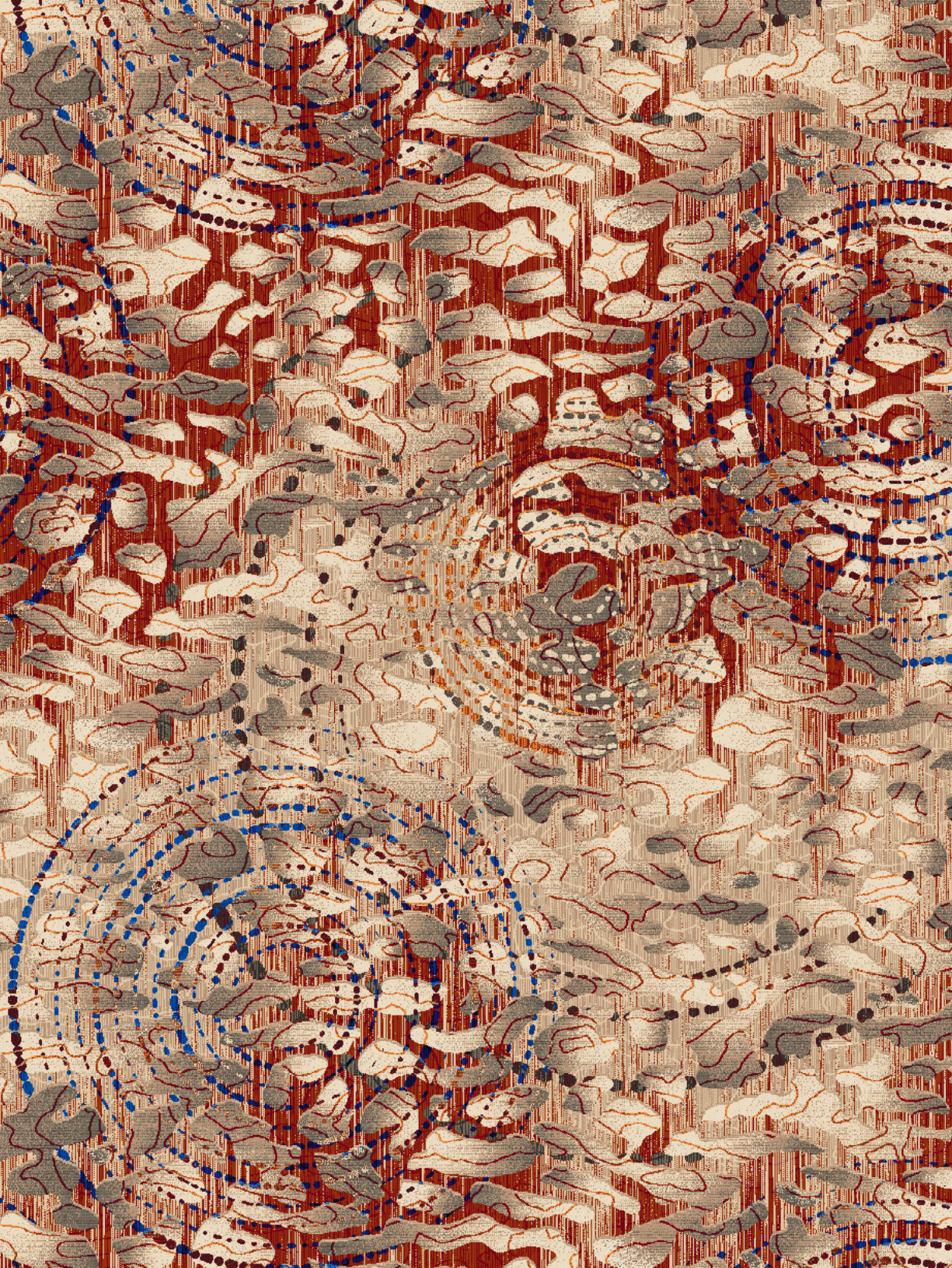
“Observing the ant farm sparked my fascination with spatial tension. I used this opportunity to express this interest by playing with asymmetrical geometric lines and the layering of organic textures, leading me to create a carpet that makes a bold geometric statement. To think I would ever be inspired by an ant farm was a fun surprise. This truly was an exercise of pure creativity.”



Design: Q01/A028844SE

©Brintons Carpets Limited
www.brintons.net





Leah Jack, VP of Design, Brintons Americas:

"Having lived in Dallas for 6 years I was no stranger to co-habiting with ants on a daily basis. To say I wasn't a fan would be an understatement but watching these amazing little creatures create a home from just a narrow container of sand and water really changed my perspective! I was mesmerized by the maze of tunnels the ants painstakingly worked on day and night. Creating, changing, destroying, and repairing. I was quite literal with my design direction and interpretation. Layers of tunnels and tracks constantly worn away by the movement of the sand under the march of the busy workers. Further online investigation led to learning about the "ant mill" or "ant death spiral" where the ants will follow the leader into a circle going around and around until they die of exhaustion!"

1	2	3	4	5	6	7	8	9
28-1932	28-1981	28-1912	28-4019	22-V12	22-1973	13-0253	27-4146	27-4143
10	11	12	13	14	15	16		
27-4139	21-4250	23-3033	16-0079	23-3613	23-2855	23-4233		

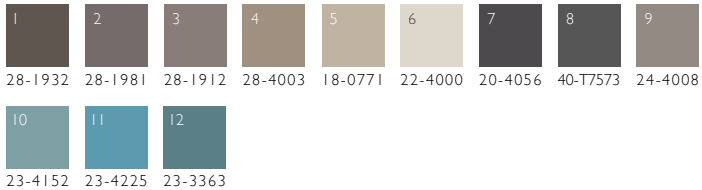
Design: Q01/A034160SE

©Brintons Carpets Limited
www.brintons.net



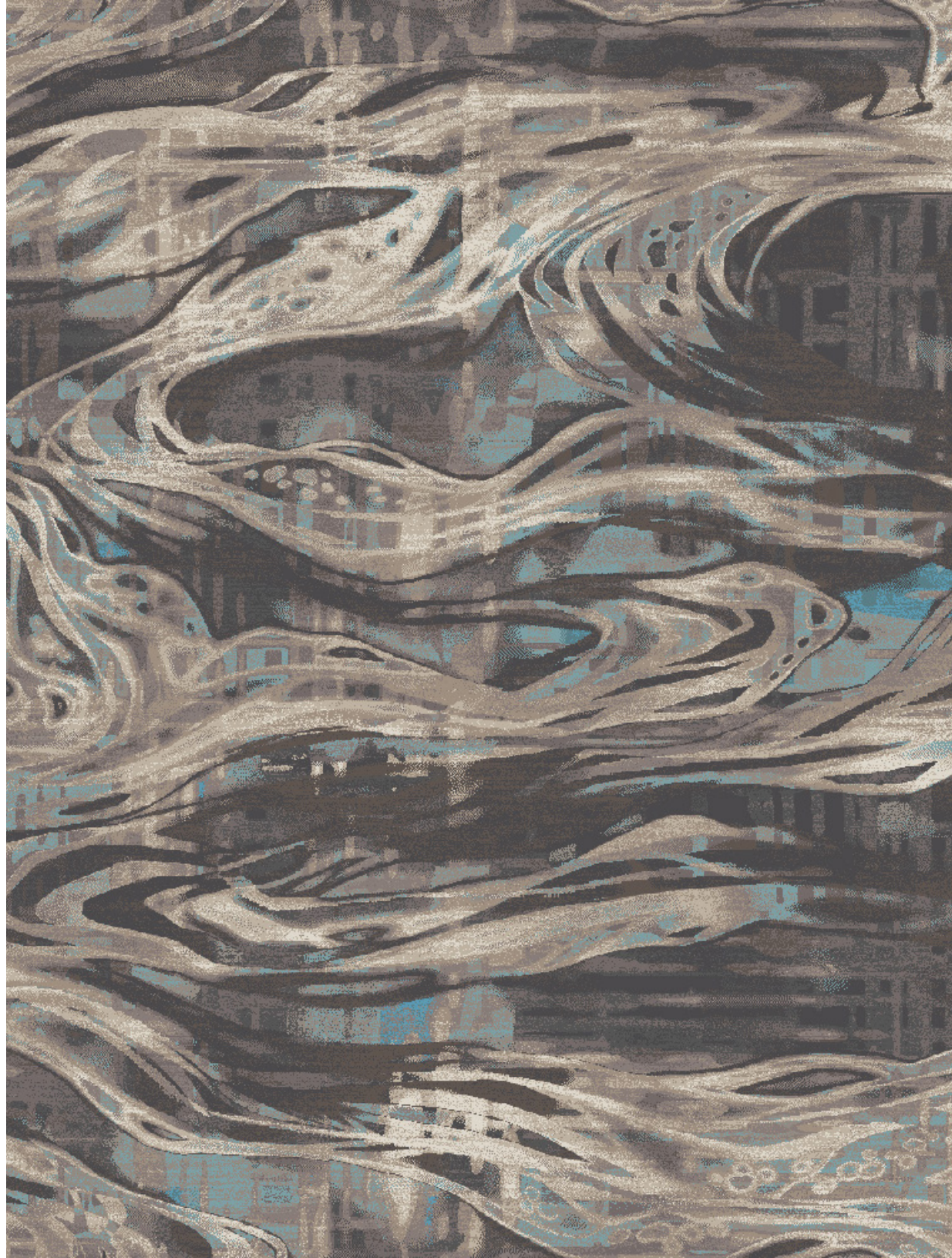
Sam Hoeffler, Designer, Brintons Americas:

"The ant farm was something completely different to work with and I loved that there were so many different ways to interpret it. I was immediately inspired by how the ants acted in ways that seemed both incredibly structured but chaotic at the same time. They were methodical in how they moved the sand to create their tunnels, but went completely crazy whenever we gave them food or water. I tried to mimic this by combining a structured background with a very organic, flowing top layer. I really loved the way the sand balls stood out in the tunnels against the packed sand and tried to incorporate the same fun details in my design. For the color I tried to stick to a natural palette that was both like sand and water, but also wanted to have a tiny unexpected pop of color (the lightest blue)."



Design: Q01/A032217SE

©Brintons Carpets Limited
www.brintons.net





See the Self-Expression Project designs [here](#)



discover more on DSO
dso.brintons.net